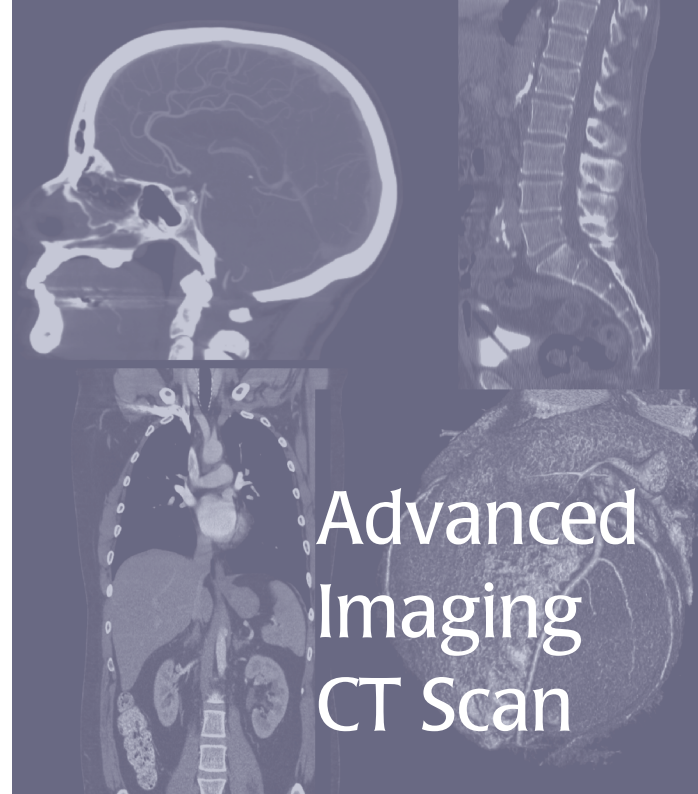




The Advanced Imaging Center at Westchester Medical Center is a one-stop, full-service facility offering the latest advanced diagnostic technology in such areas as MRI, CT Scan, Bone Density, Ultrasound, Mammography and General Radiology, including one of the most advanced imaging system available for clinical care, the 256-slice computed tomography (CT) scanner.

In order to maintain our high standard of care, all of our services have undergone voluntary accreditation programs from the American College of Radiology.



## Advanced Imaging CT Scan

### What is a CT scan?

A CT scan (Computed Tomography), also known as a CAT scan is a painless diagnostic procedure, which generates a sequence of highly detailed images of your brain, organs, and bones. This special machine directs a series of x-rays through the body to produce cross-section images. We utilize one of the most advanced imaging systems available for clinical care, a 256-slice CT scanner. This scanner offers considerable advantages to our patients as it allows scans to be completed in a shorter time. At Advanced Imaging, we care about producing high quality CT images at low radiation dose to the patient. We are accredited under the American College of Radiology (ACR) CT Accreditation Program, and our CT radiation doses are well below the ACR recommended levels.

### Westchester Medical Center Advanced Imaging

**19 Bradhurst Ave., Suite 1000, Hawthorne, NY 10532**

Phone: (914) 493-2500

to schedule an appointment press 2

Fax: (914) 493-2501

For more information about inpatient radiology please call 914-493-1512 (for CT)

10-0066 12.10



**WESTCHESTER  
MEDICAL CENTER**  
ADVANCED IMAGING

To ensure that all patients scheduled for CT Scan procedures are properly prepared and knowledgeable of the exam.

## How do I prepare for my CT scan?

Very little preparation is required for a CT scan. Prior to the scan, you are encouraged to go to the bathroom. Depending on the study you may be asked to refrain from eating for a period of time prior to the test. It is important to remove any metal prior to the exam, such as jewelry, eyeglasses, dentures, and belt buckles, as it could interfere with the image quality.

## Intravenous injections?

For some procedures, it may be necessary to inject an iodine based contrast material, sometimes referred to as “dye”, which enables radiologists to see specific areas of your body more clearly. The need for this will be determined by the radiologist, based on the information your doctor provides us. The injection is usually performed at the same time images are being taken. Some patients may experience a feeling of warmth while the dye/contrast is being administered; this is normal. Most people do not experience complications. However mild reactions may occur including sneezing, itchiness, and hives. These reactions will pass without treatment or respond quickly to medication.

## What can I expect during the CT scan?

The scan is performed by a CT technologist, who is specially trained in the use and operation of CT scanners. After you enter the room, the technologist will explain the test to you and answer any questions you may have. During the scan you will feel the table moving and will be asked to hold your breath for short periods of time. It is very important that you lie perfectly still during the scan. Throughout the entire examination, you will be able to speak to the technologist via an intercom. Technologists will talk with you frequently during the scan, explaining the procedure each step of the way.

## How long will the CT scan take?

Each CT scan is different. However, most scans take between 15 to 30 minutes.

## What will happen following my CT scan?

You may leave immediately following your CT scan. You may resume normal activities.

## How do I find out the results of my CT scan?

Your CT scan will be reviewed by a radiologist. The radiologist will send a report to your physician, who will give you the results of the scan.

## Important Considerations

- Please remember to bring your doctor’s written prescription for the test with you along with your insurance card.
- Please wear comfortable clothing. You may be asked to change into a hospital gown.
- For studies requiring “dye”, you will be asked not to eat anything solid for 4 hours prior to the test (depending on the type of scan you are having, you may be asked to drink an oral contrast material).
- We may require you to have blood work done prior to the scan to determine your kidney function. If you are on certain drugs, like Glucophage, you will be asked to stop taking this medication for 48 hours after the injection of “dye”. Please follow up with your physician after the scan.
- If you are pregnant, or think you maybe pregnant, please inform the CT technologist or nurse PRIOR to the test.
- If you have any electronic implants like pacemakers or stimulators, please inform the technologist prior to the scan. These objects may be affected by certain types of scans.

### Special Services Available at Advanced Imaging

- Cardiac CT Scans
- CT Urograms
- CT Scanograms
- CTA Abdominal Aorta with extremity runoff
- dental scans
- CT brain perfusion studies
- CT cardiac scoring
- CT enterography
- CT cholangiogram
- High resolution CT scanning of chest
- CT angiography w/ volumetric measuring
- CT pulmonary nodule studies
- CT scanogram (dedicated leg length studies)

